

**Your partner for individual  
end-of-line packaging solutions**  
for the pharmaceutical and cosmetic production



**Automating your success**

[www.christ-ps.com](http://www.christ-ps.com)



# Christ Packing Systems

Packaging machines "Made in Germany"



## Automating your success

- Individual packaging solutions
- 130 highly qualified employees
- 12.500 m<sup>2</sup> production area
- Lean-oriented material flow
- High degree of in-house production
- Short delivery times
- 70 years of experience
- 3000 machines in operation worldwide

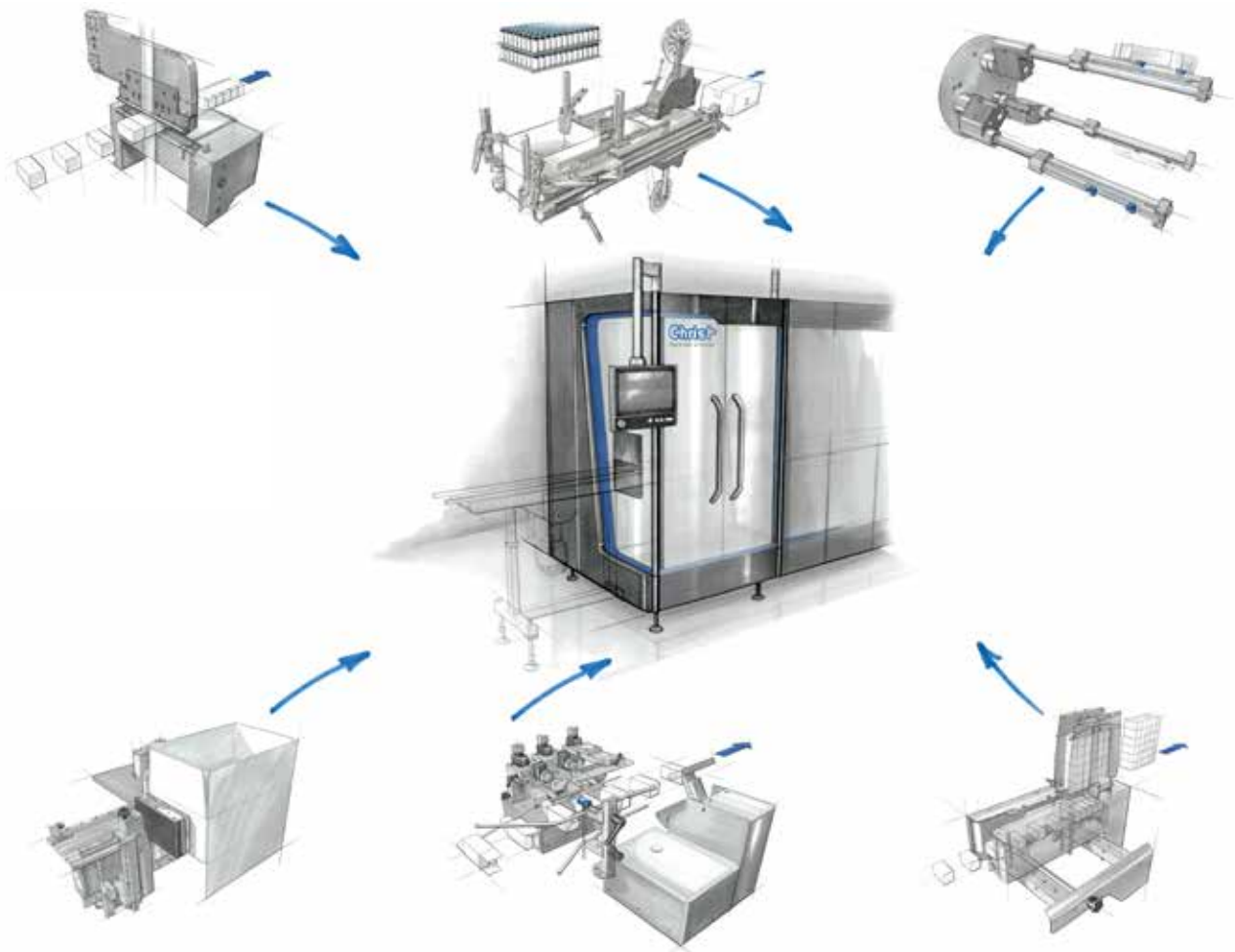


# Combination makes the difference...

Hundreds of well-tries modules to meet your individual needs

## Tailor-made solutions

- Development of machine concepts
- Adaption of standard machines
- Ergonomic operation and design



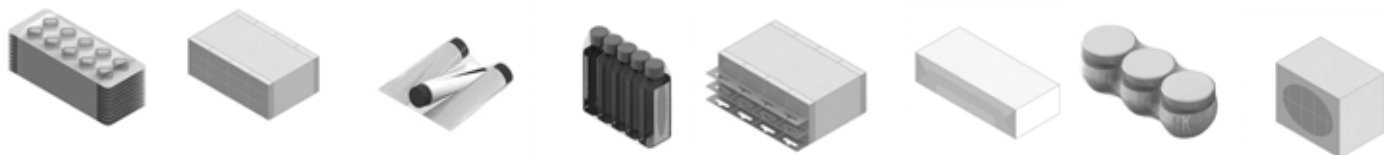
# Machine portfolio

## Packaging possibilities

### BoxTeq – Cartoning



### FilmTeq – Film packaging



### CaseTeq – Shipping case packaging



### PalTeq – Palletizing





**High format flexibility and a variety of packaging variants – this is the base concept of our BoxTeq series. Quick format change and a user-friendly design are meeting the highest demands.**

### **Performance**

- Up to 120 cycles / minute

### **Chain pitch**

- 6, 9 and 15 inches

### **Packaging material**

- Cartons

### **Products**

- Blisters
- Bottles
- Tubes
- Vials

### **Product infeed**

- Bucket chain
- Turning screw
- Customer-specific solutions

### **Types of closure**

- Tuck-in
- Hot-melt

Type of closure is convertible!

### **Further characteristics**

- Leaflet folder or friction feeder to supply product insert
- Pre-infeed pusher for leaflets
- Carton magazine moveable in service position

# FilmTeq

## Film packaging



With compact design and flexible infeed modules our FilmTeq machines are well prepared to meet the market's wide range of demands.

### Performance

- Up to 75 bundles / minute

### Packaging material

- LDPE film
- BOPP film

### Products

- Cartons
- Blisters
- Tubes
- Bottles
- Cans

### Types of packaging

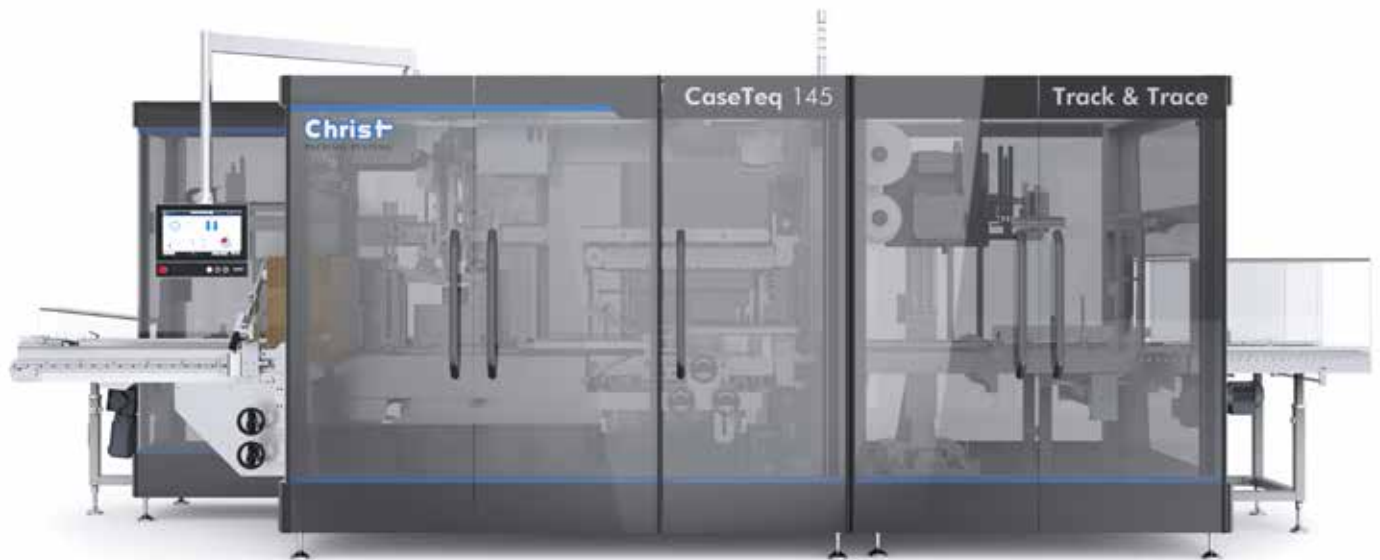
- Sleeve
- Sleeve with shrink
- Full overwrap

### Stacking options

- Stacker
- Turning-stacker

# CaseTeq

## Shipping case packaging



**Great accessibility, ergonomics and simple format changes – this is the main focus of our casepackers.**

**Depending on your application, there is either a semi-automatic machine concept or a fully automatic solution to fulfil your needs perfectly.**

### Performance

- Up to 30 cases / minute

### Packaging material

- Shipping case (American Case)
- Wrap-around case
- Tray

### Products

- Cartons
- Display cartons
- Products bundled with film
- Bottles
- Vials
- Cans

### Machine types

- Semi-automatic sideloading casepacker
- Fully-automatic sideloading casepacker
- Fully-automatic toploading casepacker

### Closure

- Adhesive tape
- Hot-melt





# PalTeq

## Palletizing



Within the PalTeq range there can be found a solution for each palletizing application – palletizers in portal or side-portal style, robot systems or collaborative robots.

### Performance

- Up 12 movements / minute

### Packaging material

- Pallet

### Products

- Shipping cases
- Display cartons
- Products bundled with film

### Additional components

- Pallet magazine
- Magazine for intermediate layers
- Roller conveyor
- Strapping unit
- Stretcher

### Format range

- Euro pallet
- Industrial pallet
- Special pallet





# Packaging lines

Everything from one single source

**Christ Packing Systems offers turnkey project planning for the entire packaging process. We are supporting you from the idea to the production start. To compile a complete packaging line, machines from our product range are combined with equipment of sub-suppliers.**

## **Our services:**

- Project planning of appropriate solutions
- Selection of competent partners
- Design review meetings
- Machine factory acceptance tests
- Start-up
- Training



# Track & Trace

## Optimal safety for the production process

Production relevant information stored in codes (1D / 2D / Datamatrix) can be verified and analysed at any time to track the entire production process.

Christ Packing Systems is cooperating with leading system suppliers and offers a range of pre-defined packages. These can be integrated in new machines as well as in machines that are already in operation.

### Cartoner

- Code control product
- Code control carton
- Code control product insert
- Attendance control product insert

### Printing device

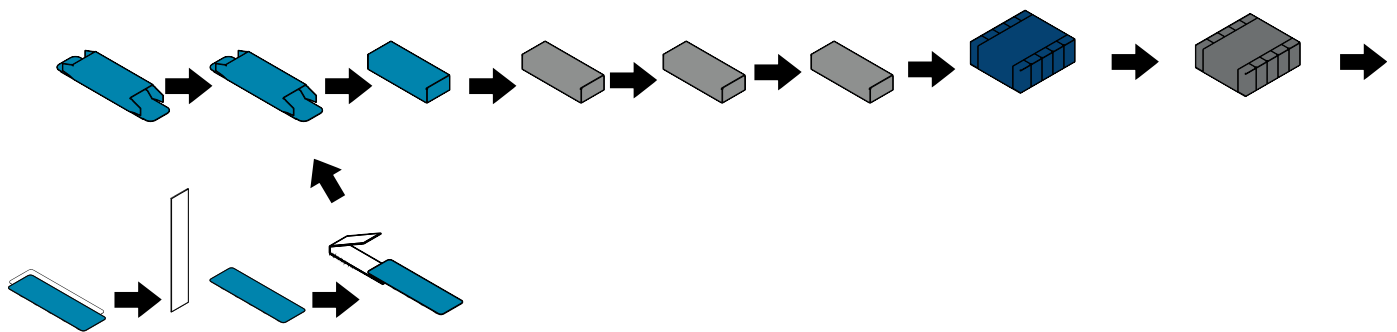
- Printing on carton
- Quality and code control of carton printing

### Film packaging machine

- Code reading of carton
- Code in film bundle

### Labeller

- Printing, application and control of bundle label



### Case packaging machine

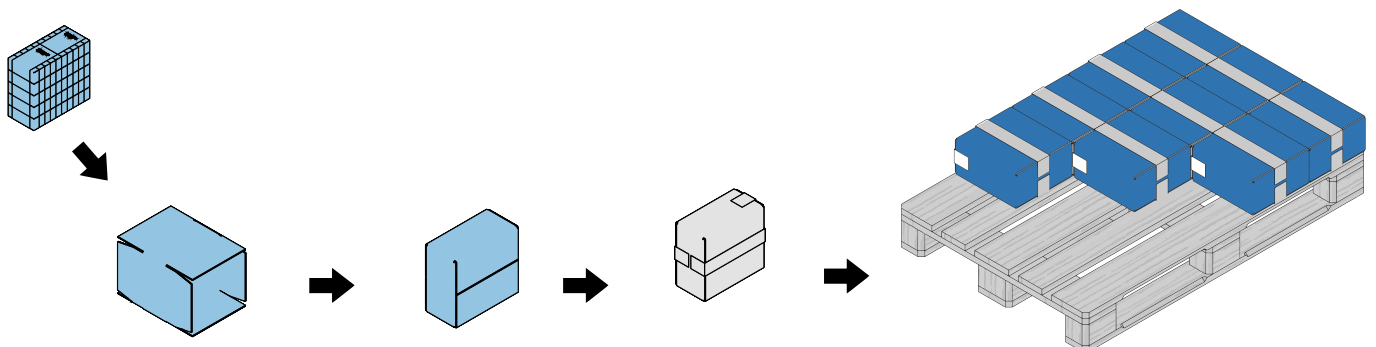
- Code reading of bundle code on label or carton code in case bundle

### Labeller

- Printing, application and control of case label

### Palletizer

- Code reading of case label and application of pallet label



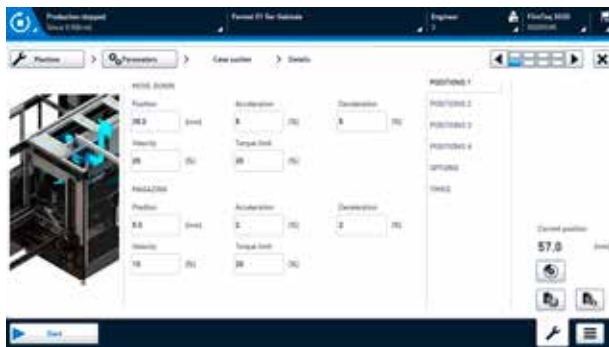
# HMI

## Optimized operating concept



### Hardware

- Capacitive touch display in solid aluminium case with easy-to-clean glass surface
- High definition
- Powerful IPC-based hardware with SSD hard disk
- Integrated UPS
- Optional remote maintenance via Gateway Hardware
- Import and export of data via USB or Ethernet



### Software

- Clear und functional user surface
- Intuitive user guidance with graphics of machine components and structured reporting system
- Clear user and format administration
- Optional connection to customer domain via Active Directory/ LDAP
- 21 CFR Part 11 compliant audit trail
- Batch report (digital and printable)
- Logging of statistical data such as OEE and production figures
- Pack ML compliant programme structure (operation status and mode)
- Connection to SCADA/MES via OPC-UA
- Backup and restore options
- GAMP5 compliant software development

# Project management

## Our basis for successful projects

Due to modern planning tools, all activities are coordinated between all departments in order to achieve results as scheduled and according to high quality production standards as well as transparent project monitoring.

Your advantage – one single contact from project start to successful completion.

### Our services:

- Creation of project plans
- Planning of delivery dates
- Monitoring of project progress
- Change Management
- Status updates
- Design review meetings
- Planning and execution of FAT and SAT







## Quality management

Long-term customer satisfaction by means of best quality

### **You are our focus.**

We work towards securing best quality in all areas every day, continuously seeking to improve our processes.

Our company is certified by DIN EN ISO 9001:2015.

## Machine qualification

Proven functionality

**In accordance with your user requirement specification, we submit a broad offer of qualification documents:**

- Functional Specification
- Hardware-/ and Software-Specifications
- Installation Qualification
- Operational Qualification
- Traceability Matrix
- Backup and Restore Documentation
- GMP Risk Analysis / FMEA Workshop
- Disaster Recovery Plan
- Qualification Project Plan

All our qualification documents comply with current GMP guidelines.



## Service

Your long-term production is important for us!



### **Spare and format parts**

- In-house production of all machine parts
- Large stock of spare and format parts
- Flexible production of complex spare parts
- Worldwide shipping of spare parts

### **Service technicians**

- Worldwide availability
- Permanent training
- Long-term customer satisfaction
- Long machine life cycle

### **Maintenance and upgrades**

- Installation, start-up and SAT at your site
- Support for qualification and validation
- Remote maintenance
- Regular maintenance
- Technology-Upgrades (Retrofit)

# The Christ Group at a glance

We are part of the Christ Group

The Christ Group is a corporate association under the roof of the Otto Christ AG, with the aim to combine existing abilities and to make full use of synergies.

## Otto Christ AG

- Leading manufacturer of car wash systems in Europe
- 1500 employees throughout Europe
- 84.584 m<sup>2</sup> covered production area
- Annual turnover of 170 million Euro



## Christ Electronic Systems GmbH

- Manufacturer of computer panels, touch panels, measuring equipment as well as electronic components
- Customers in the field of industry, medical and mobile technology

In particular, we can resort to Christ Electronic Systems' know-how in the field of complex visualization challenges and touch panels.



For the 25th time, the competition TOP 100 has identified the most innovative companies amongst small and medium-sized German companies.

Otto Christ AG can count itself among these leaders of innovation and has been named for the third time amongst the innovation elite.







**„Of course I care about the future.  
I intend to spend the rest of my  
remaining life in it.”**

Mark Twain

**Contact**

Regardless of what you concern maybe – our skilled employees look forward to supporting you at any time!

**Challenge us –  
We are looking forward to meeting your  
demands!**



0049 (0) 8332 – 910 – 0



[sales@christ-ps.com](mailto:sales@christ-ps.com)

[service@christ-ps.com](mailto:service@christ-ps.com)



**Christ Packing Systems GmbH & Co. KG**

Johannes-Gutenberg-Straße 12

DE-87724 Ottobeuren

[www.christ-ps.com](http://www.christ-ps.com)